

ANNUAL GENERAL MEETING

26 APRIL 2018



SING HOLDINGS LIMITED

DISCLAIMER

This presentation may contain statements that involve risks and uncertainties. Actual future performance, outcomes and results may differ materially from those expressed in such statements as a result of a number of risks, uncertainties and assumptions. Past performance is not necessarily indicative of future performance. You are cautioned not to place undue reliance on these statements, which are based on the current views of management on future developments and events.



SING HOLDINGS LIMITED

FINANCIAL HIGHLIGHTS



SING HOLDINGS LIMITED

Key Financial Data - FY2017

Group Income Statement

S\$'000

Revenue

41,248

Profit attributable to shareholders

3,305

Key Financial Data - FY2017

Group Balance Sheet

S\$'000

Investment property

114,851

Property under development for sale

299,455

Cash and cash equivalents

108,828

Interest-bearing bank loans

274,463

Equity attributable to shareholders

254,749

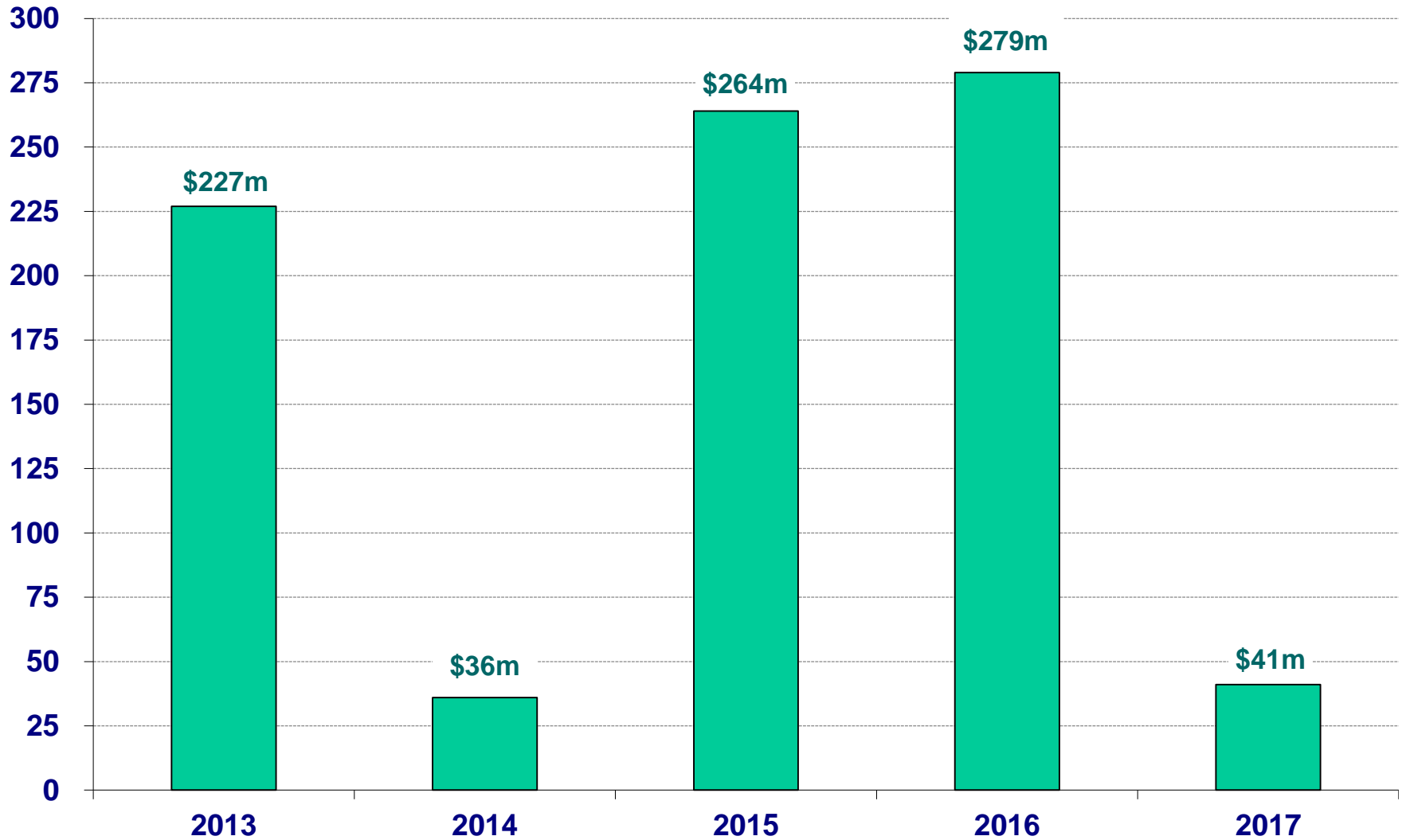
Key Financial Data - FY2017

Financial Ratios

Earnings per share (cents)	0.82
Net asset value per share (cents)	63.53
Dividend per share (cents)	1.00
Dividend yield (%)	2.27

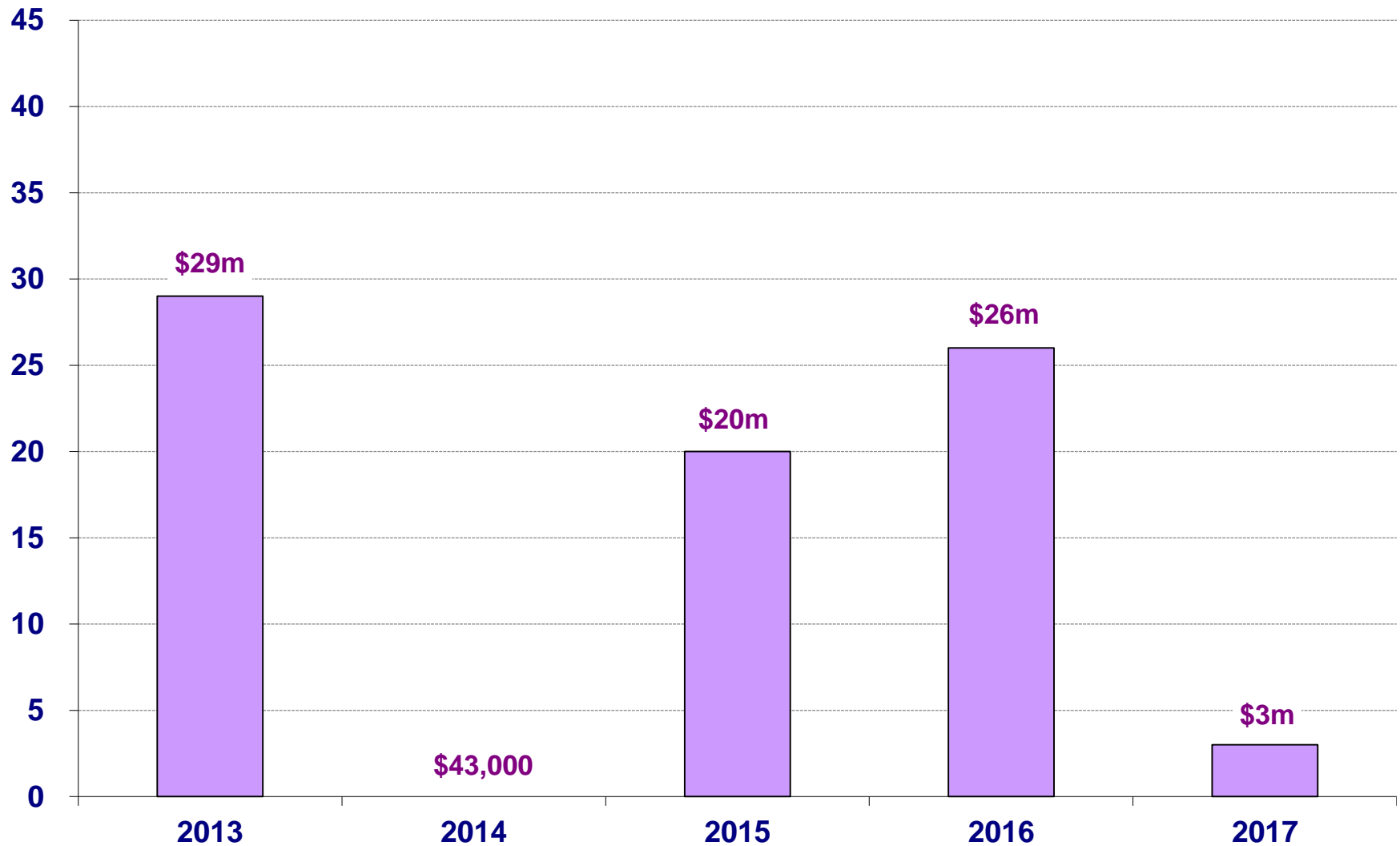
Revenue

\$'million



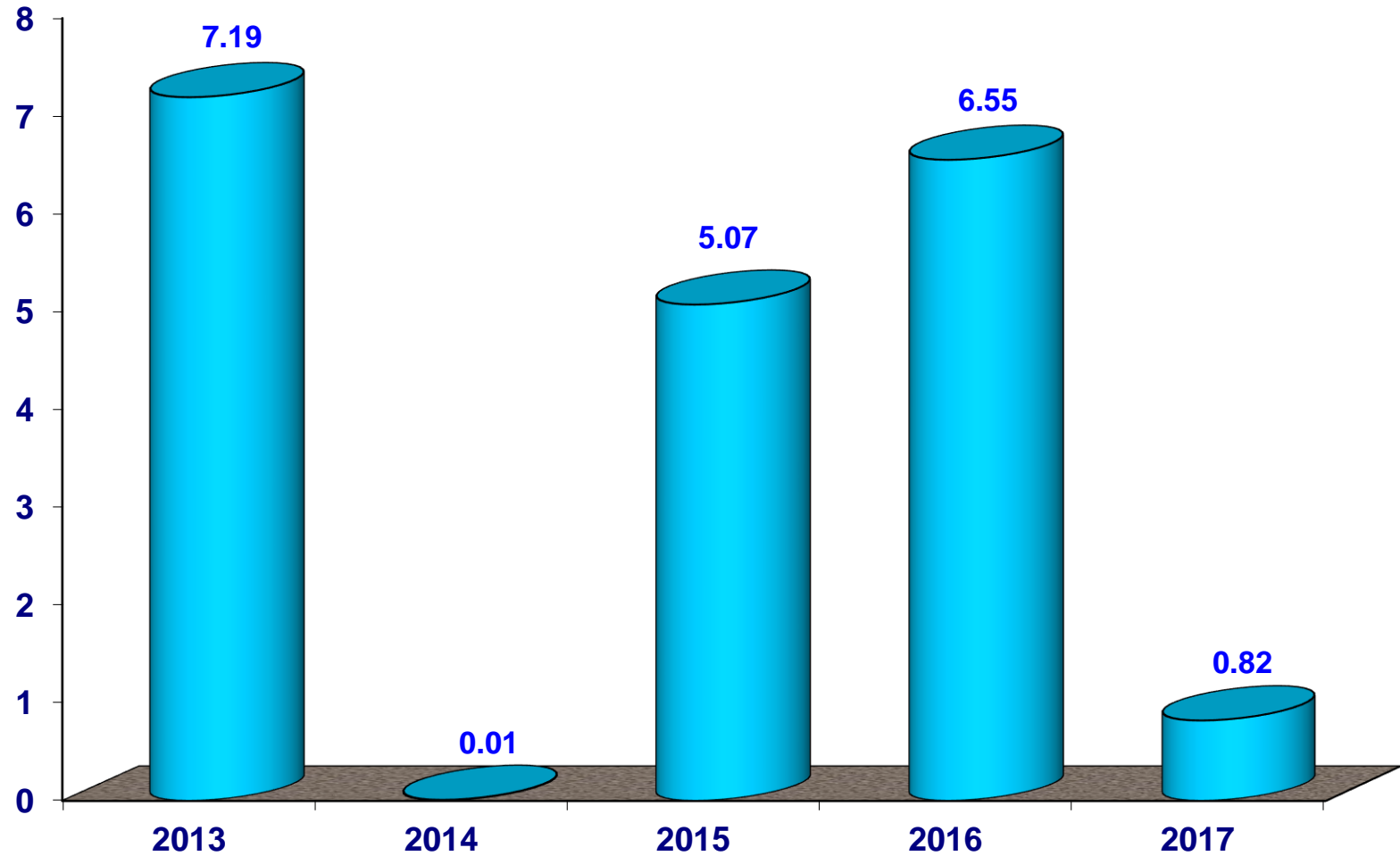
Profit Attributable to Shareholders

\$'million

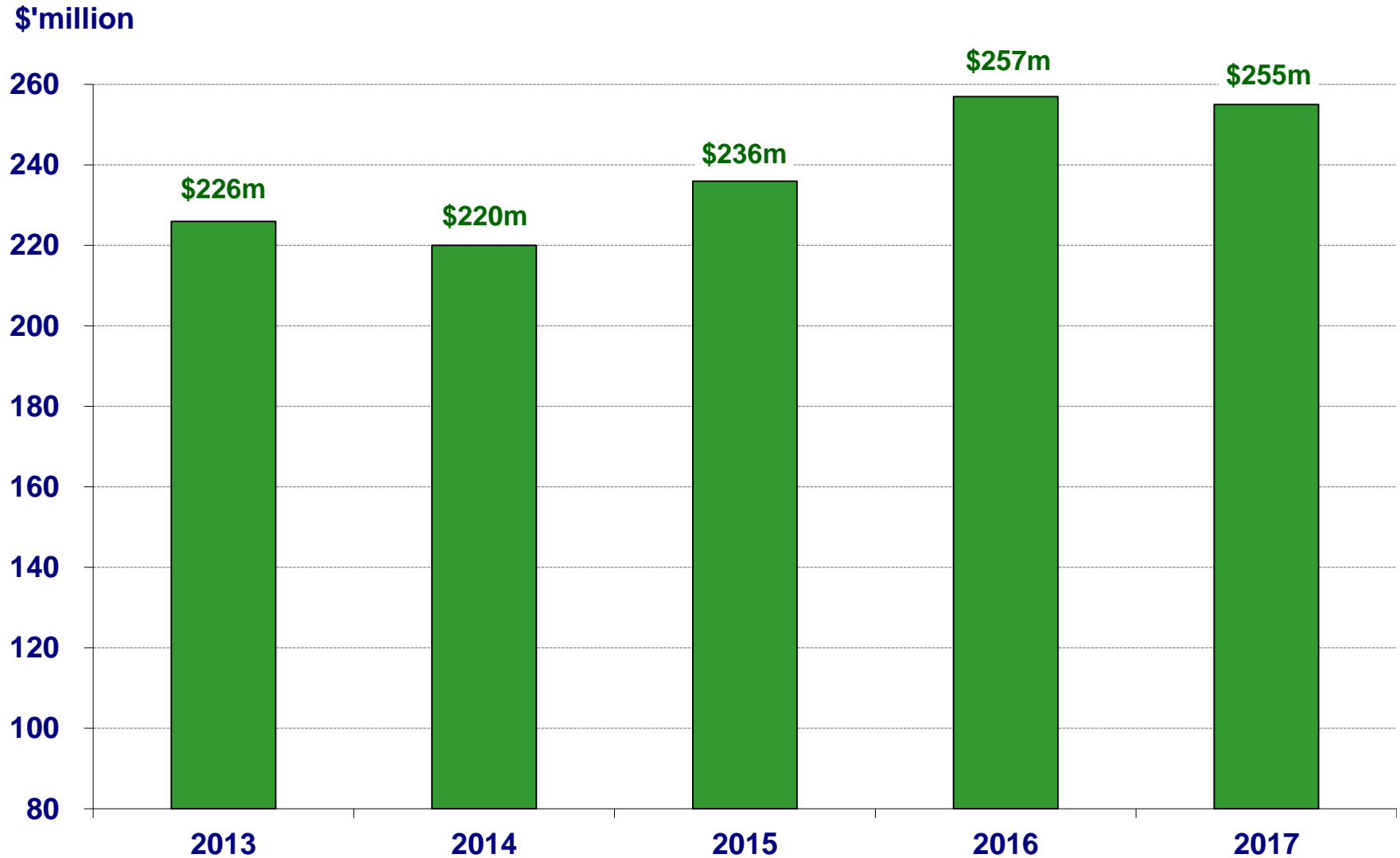


Earnings Per Share

(cents)

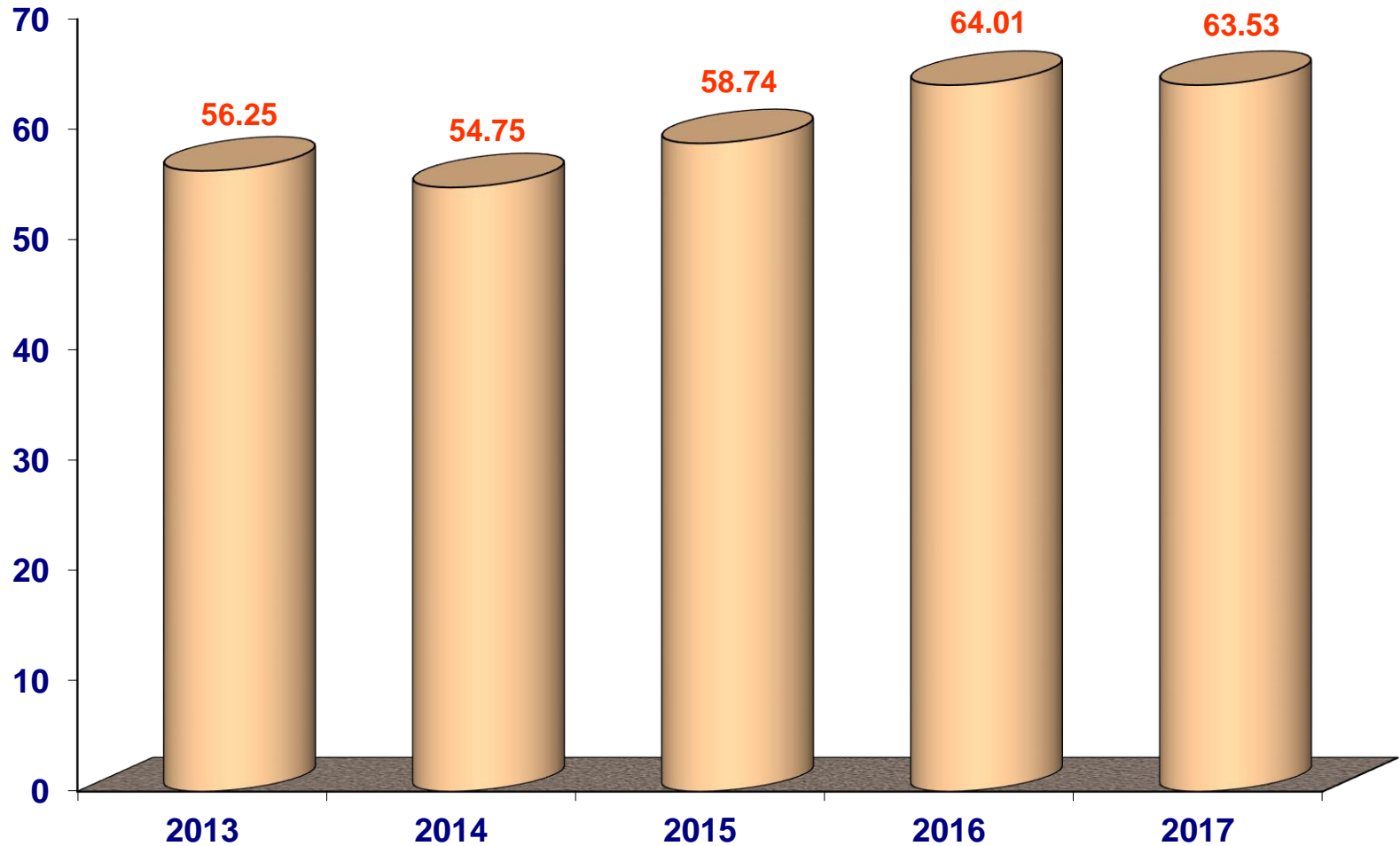


Equity Attributable to Shareholders

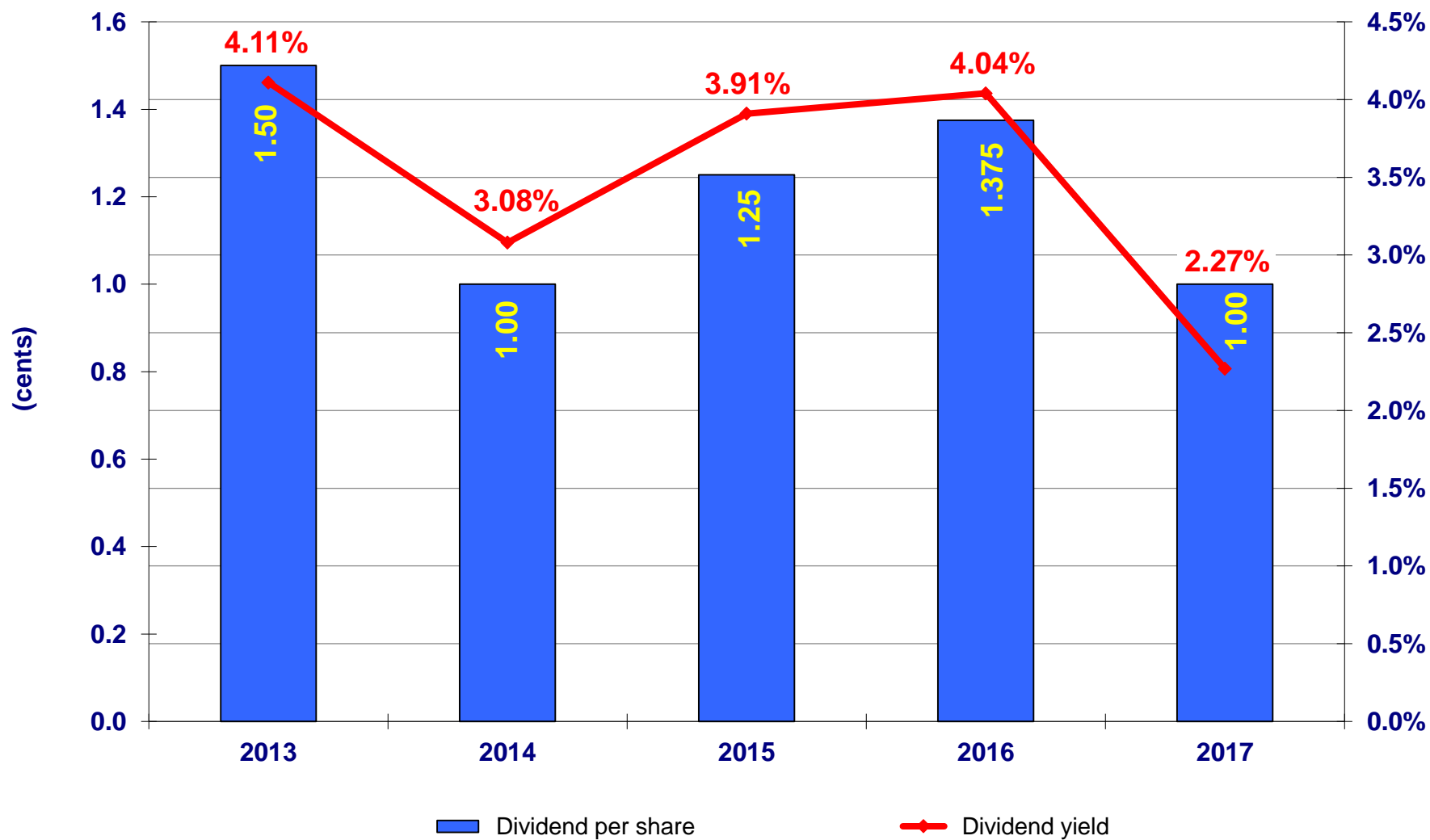


Net Asset Value Per Share

(cents)



Dividend Yield



Proposed Dividends

Dividend Period	1 Jan 2017 – 31 Dec 2017
Final Dividend	1.00 cent per share
Type of Dividend	Cash
Last Day of Trading on “Cum” Basis	2 May 2018
Record Date	5.00 p.m., 7 May 2018
Payment Date	18 May 2018

1-Year Stock Chart (April 2017 – April 2018)



Source: Reuters

UPDATE ON EXISTING PROPERTIES



SING HOLDINGS LIMITED

Residential Development



*Parc Botannia
Fernvale Road*

Artist's Impression

Parc Botannia

Salient points:

- ❖ Thanggam LRT station at door-step
- ❖ Abundant amenities in the vicinity such as The Seletar Mall, Compass One, eateries along Jalan Kaya, Sengkang Sports Centre and Sengkang Riverside park
- ❖ Secondary and primary schools in the neighbourhood
- ❖ Easy access via Tampines Expressway
- ❖ Seletar Aerospace Park may provide pool of prospective purchasers and tenants

Parc Botannia

Welcome To A World Of Infinitely Cherished Moments

Indulge in the myriad of lifestyle facilities
set on our lush sprawling grounds.

- 1 Contour Garden
- 2 Adventure Play
- 3 Musical Play Panel
- 4 Trampoline
- 5 Flower Drums
- 6 A-maze-zing Garden
- 7 Putting Green
- 8 Function Room
- 9 Water Wall
- 10 Family Pavilion
- 11 Arrival Lounge
- 12 Water Feature
- 13 Management Office
- 14 Party Room
- 15 Evergreen Boulevard with
Spinning Chairs
- 16 Fitness Clubhouse
- Gym
- Yoga Deck
- Arum Fern Garden
- Changing Room
- 17 Outdoor Fitness
- 18 Floral Trellis
- 19 Family Swing
- 20 Picnic Lawn
- 21 Jasmine Aroma Hammock
- 22 Shrubbery Discovery Garden
- 23 Community Garden
- 24 Family Cabanas
- 25 Kids' Play Pool
- 26 Dancing Fountain
- 27 Rainbow Kids' Spa
- 28 Kids' Wading Pool
- 29 Aqua Deck
- 30 Jacuzzi Alcove
- 31 Pool Deck
- 32 50m Lap Pool
- 33 Water Bridge
- 34 Bosque Garden
- 35 Floating BBQ Pavilion
- 36 Tennis Court
- 37 Cyathos Fern Walk
- 38 Aquatic Pals' Pavilion
- 39 Chill-Out Pavilion
- 40 Reading Pavilion
- 41 Balinese Pavilion
- 42 The Garden Gate
- 43 Misty Fern Walk
- 44 Secret Garden
- 45 Family BBQ Pavilion
- 46 Grass Court with Chess Set
- 47 Side Gate
- 48 Child Care Centre Playground
- 49 Nectar Trail
- 50 Jogging Track
- 51 Bin Centre
- 52 Substation
- 53 Transformer Room
- 54 Guard House
- 55 Main Entrance Drop Off
- 56 Child Care Centre

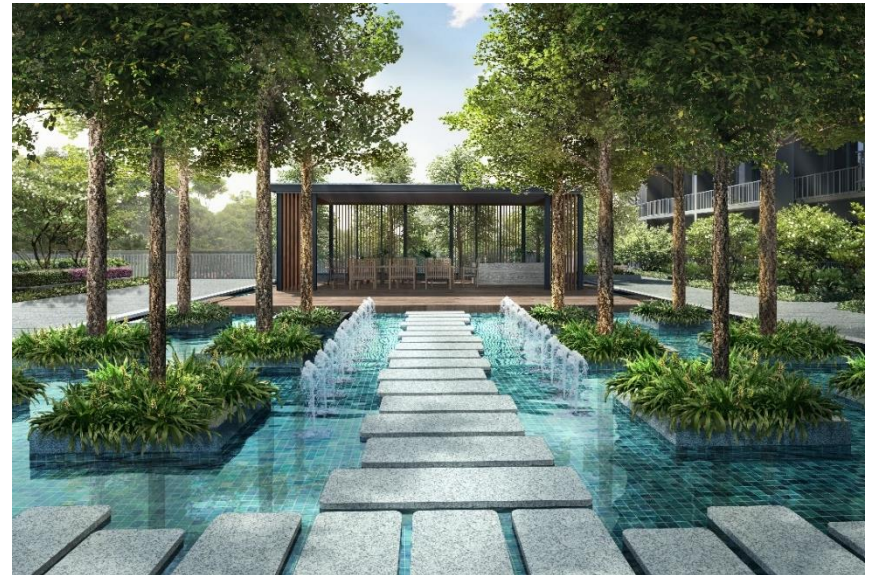
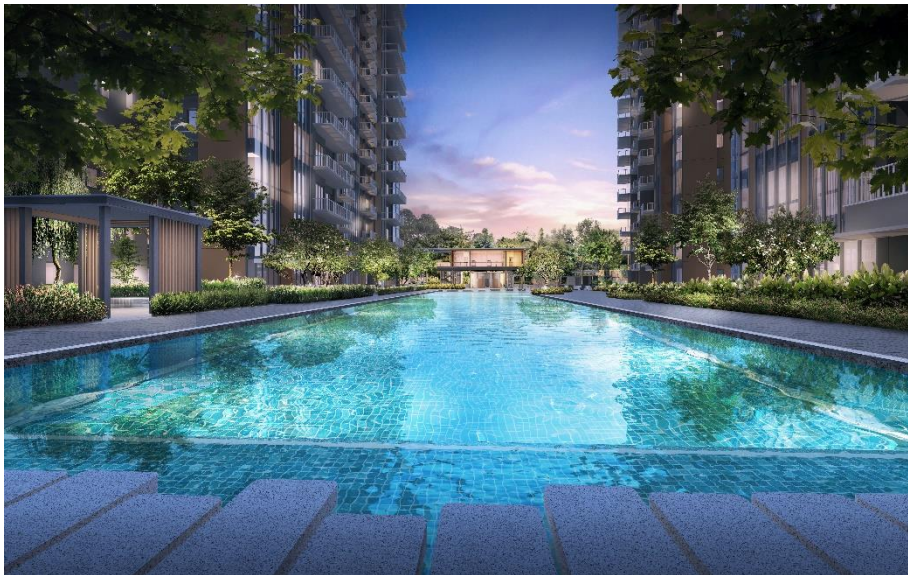
SITE PLAN

FERNVALE STREET

FERNVALE ROAD



Parc Botannia



Artist's Impression

Parc Botannia



5-bedroom show unit



3-bedroom show unit

Parc Botannia

❖ Type of property:	Condominium
❖ Tenure:	99-year Leasehold
❖ Land area:	185,095 sf
❖ Gross floor area incl. balcony:	610,235 sf
❖ Purchase price incl. differential premium for balcony:	\$303 million
❖ Construction commencement:	3Q 2017
❖ Estimated completion:	4Q 2020

Parc Botannia

- ❖ Saleable area: 561,403 sf
- ❖ Number of units: 735
- ❖ Unit sizes: 420 – 1,679 sf
- ❖ Options issued: 51% of units
- ❖ Sales value: \$329 million
- ❖ Revenue recognition: Percentage of completion

Hotel



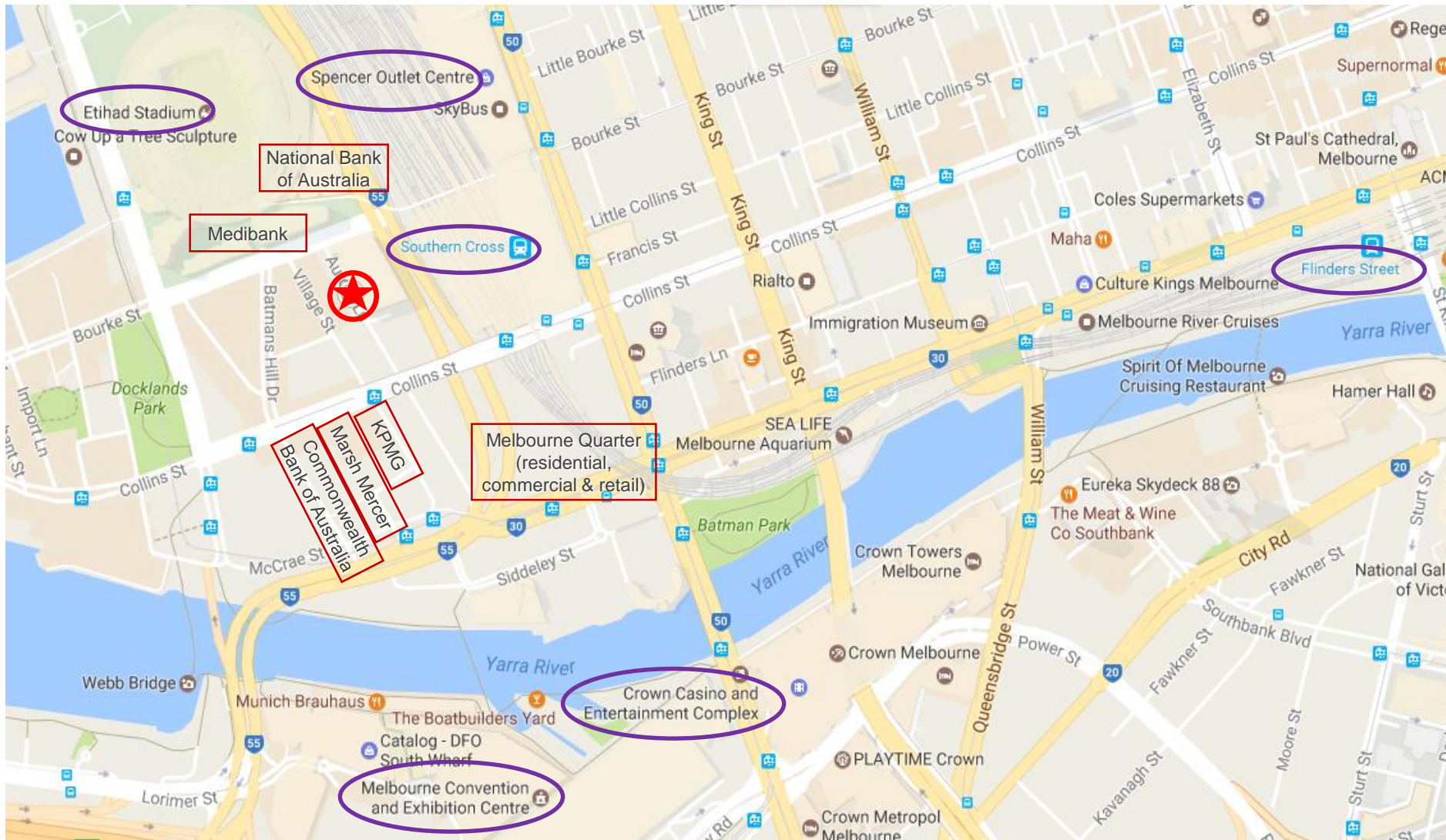
*Travelodge Docklands
Melbourne*

Travelodge Docklands

Salient points:

- ❖ Hotel is in the immediate vicinity of the Southern Cross Railway Station
- ❖ Within minutes' walk to Etihad Stadium, Spencer Outlet Centre, Melbourne Convention & Exhibition Centre and Crown Casino
- ❖ Near to numerous corporate headquarters such as Medibank, National Australia Bank, KPMG etc.
- ❖ Benefits from local travelers, tourists and corporate guests
- ❖ Docklands is a redevelopment precinct and construction is due for completion around 2025

Travelodge Docklands



Travelodge Docklands



Travelodge Docklands



Travelodge Docklands

- ❖ Type of property: 14-storey limited service hotel
- ❖ Tenure: Freehold
- ❖ No. of guest rooms: 291, each 24 sqm
- ❖ Amenities: Restaurant, meeting rooms, business centre and guest laundry services
- ❖ Operator: TFE Hotels, jointly owned by Toga Group and Far East Hospitality Holdings
- ❖ Lease expiry: June 2020 with 3x5-year renewal option
- ❖ Purchase price: A\$107 million (~ A\$368,000 per key)
- ❖ Yield (FY2017 EBITDA): 6.28%
- ❖ Ave Occupancy (FY2017): 92.4%

Industrial Properties

*BizTech Centre
Aljunied Road*



BizTech Centre

❖ Type of property:	Light industrial
❖ Tenure:	Freehold
❖ Number of units owned:	43 strata units
❖ Area owned:	44,275 sf
❖ Carrying value:	\$535 psf
❖ Occupancy rate:	89%

THANK YOU!



SING HOLDINGS LIMITED